

ENHANCE



ENHANCE 70

Construction: Japanese HM Carbon	Head Shape: Isometric	Frame Weight: 87g
Balance: Head Heavy	Flexibility: Stiff	Length: 675mm
String: Force 65	String Tension: 18-28lbs/8-13kgs	Code:

RACKET TECHNOLOGIES

ISOMETRIC HEAD SHAPE XTREME POWER
 PRO V12 GROMMETS STABILIZER TOPCOAT
 ULTRA-LITE CAP TRIPLE TAPER TECHNOLOGY
 JAPANESE HM CARBON

Player Type: Intermediate Power

Speed:	Power:	Control:
2	5.5	2.5



ENHANCE 50

Construction: Japanese HM Carbon	Head Shape: Isometric	Frame Weight: 85g
Balance: Head Heavy	Flexibility: Medium	Length: 675mm
String: Force 65	String Tension: 18-28lbs/8-13kgs	Code:

RACKET TECHNOLOGIES

ISOMETRIC HEAD SHAPE XTREME POWER
 PRO V12 GROMMETS STABILIZER TOPCOAT
 ULTRA-LITE CAP TRIPLE TAPER TECHNOLOGY
 JAPANESE HM CARBON

Player Type: Intermediate Power

Speed:	Power:	Control:
2	5	2

ENHANCE 70

Construction: Japanese HM Carbon	Head Shape: Isometric	Frame Weight: 87g
Balance: Head Heavy	Flexibility: Stiff	Length: 675mm
String: Force 65	String Tension: 18-28lbs/8-13kgs	Code:

RACKET TECHNOLOGIES

ISOMETRIC
HEAD SHAPE

XTREME TENSION
FRAME

PRO V12 GROMMETS

STABILISOR
TOPCAP

ULTRA-LITE CAP

TRIPLE TAPER
TECHNOLOGY

JAPANESE HM CARBON

Player Type: Intermediate Power

Speed: 2	Power: 5.5	Control: 2.5
-------------	---------------	-----------------

ENHANCE 50

Construction: Japanese HM Carbon	Head Shape: Isometric	Frame Weight: 85g
Balance: Head Heavy	Flexibility: Medium	Length: 675mm
String: Force 65	String Tension: 18-28lbs/8-13kgs	Code:

RACKET TECHNOLOGIES

ISOMETRIC
HEAD SHAPE

XTREME TENSION
FRAME

PRO V12 GROMMETS

STABILISOR
TOPCAP

ULTRA-LITE CAP

TRIPLE TAPER
TECHNOLOGY

JAPANESE HM CARBON

Player Type: Intermediate Power

Speed: 2	Power: 5	Control: 2
-------------	-------------	---------------

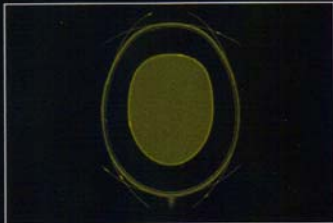


Nathan Robertson
Olympic Silver Medallist

ENHANCE

POWER SERIES

ISOMETRIC HEAD SHAPE



Rectangular head shape increases the sweet spot size for maximum power.

La forme rectangulaire de la tête offre une zone de frappe plus importante pour une puissance maximale.

Eine rechteckige Kopfform vergrößert den Sweet Spot für ein Maximum an Power.

Cabeza de forma rectangular para aumentar el punto dulce y proporcionar la máxima potencia.

矩形头框设计增加甜区面积，同时增强击球力道

PRO V12 GROMMETS



Specialised grommets allow greater string bed movement for enhanced shuttle repulsion.

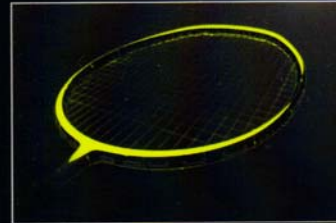
Œillets spécifiques permettant une meilleure mobilité du cordage pour un renvoi plus dynamique/rapide du volant.

Spezialisierte Ösen erlauben eine größere Saitenbett-Bewegung für einen verstärkten Shuttle Abstoß.

Canutillos especiales permiten un mayor movimiento del cordaje para generar una mayor velocidad del volante.

特殊设计的条钉提供线床的更大的活动空间，带来更强劲的反击力量

TRIPLE TAPER TECHNOLOGY



Increased graphite content in the racket head creates greater momentum for superior power.

Teneur en graphite plus importante au niveau de la tête de raquette permettant ainsi une réponse plus dynamique au niveau de la frappe.

Erhöhte Graphit Anteile im Schlägerkopf erzeugen einen größeren Impuls für ausgezeichnete Power.

Mayor contenido de grafito en la cabeza de la raqueta para aumentar la inercia y ofrecer una potencia superior.

在头框增加石墨纤维含量赋予球拍无与伦比的击球威力

MADE IN CHINA

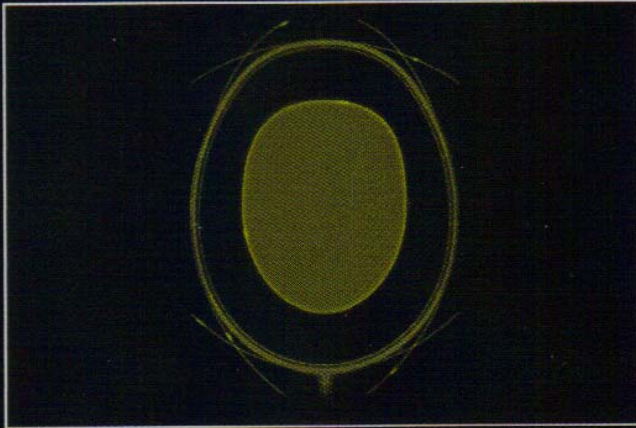
CARLTON SPORTS COMPANY LIMITED, BROOK PARK, MEADOW LANE,
SHIREBROOK, MANSFIELD, NOTTINGHAMSHIRE, NG20 8RY, UK

CARLTON AND THE 'SHUTTLECOCK' DEVICE ARE TRADE MARKS OF CARLTON SPORTS COMPANY LIMITED



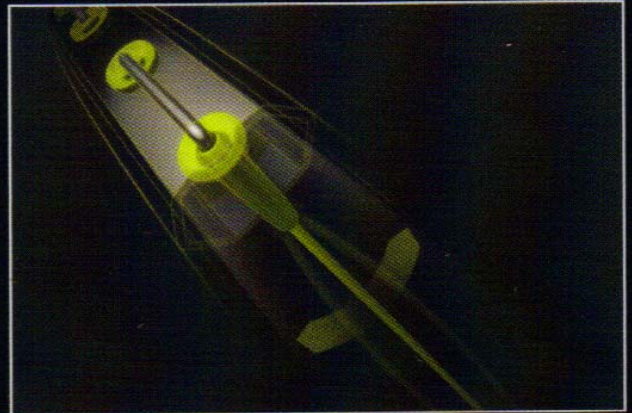
2015CB5

ISOMETRIC HEAD SHAPE



Rectangular head shape increases the sweet spot size for maximum power.

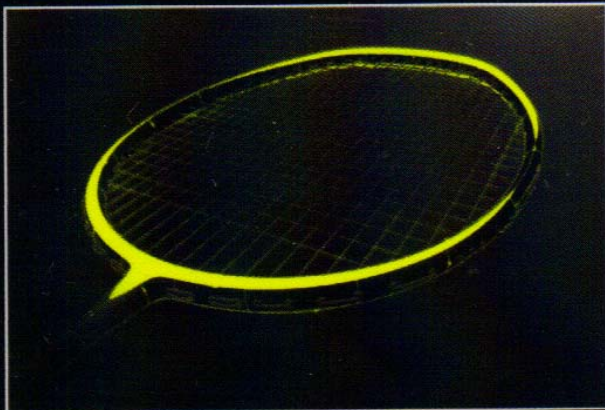
PRO V12 GROMMETS



Specialised grommets allow greater string bed movement for enhanced shuttle repulsion.

Fillets spécifiques permettant une meilleure

TRIPLE TAPER TECHNOLOGY



Increased graphite content in the racket head creates greater momentum for superior power.